

ALLDAY
& MILLER



Grange Road, Hayes, UB3 2RS
£315,000

2 1 1 B



Grange Road, Hayes, UB3 2RS

£315,000

- Two King Size Bedrooms
- Allocated parking
- Communal gardens
- Modern Fitted Kitchen
- Gated Development
- Modern Condition Throughout
- Three Piece Bathroom
- 883 Sq Ft

Description

Perfect for first time buyers or a growing family this property on offer comprises of an inviting entrance hall with a built in storage cupboard, two generously king size bedrooms, family bathroom, modern fitted kitchen leading into the reception room with a private balcony overlooking the development.

The accommodation also benefits from allocated parking space and communal gardens.

Situation

Grange Road popular residential road in Hayes located in the prime location. Hayes and Harlington station being just a short drive away with the Elizabeth line, offering several links to central London and the surrounding. Hayes town and the Uxbridge road moments away with its variety of local shops, restaurants, coffee shops and cafes. A number of high regarded schools in the local area including West Drayton Academy and Grange Park Junior School.

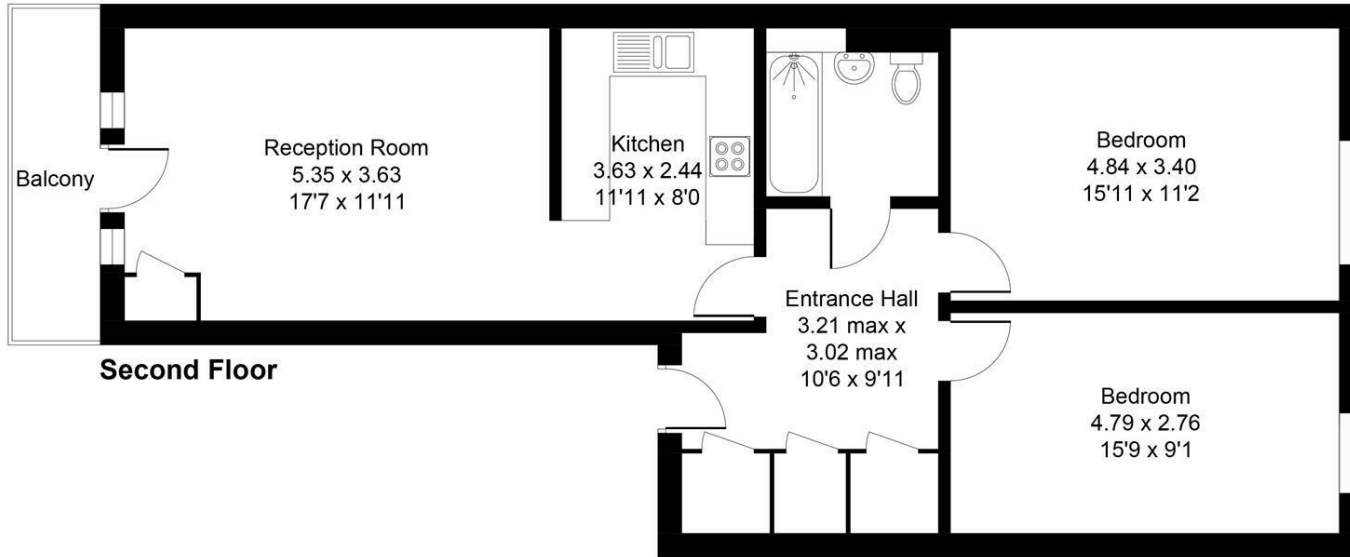


Floor Plans

George Court, Grange Road, Hayes, UB3

Approximate Area = 833 sq ft / 77.4 sq m

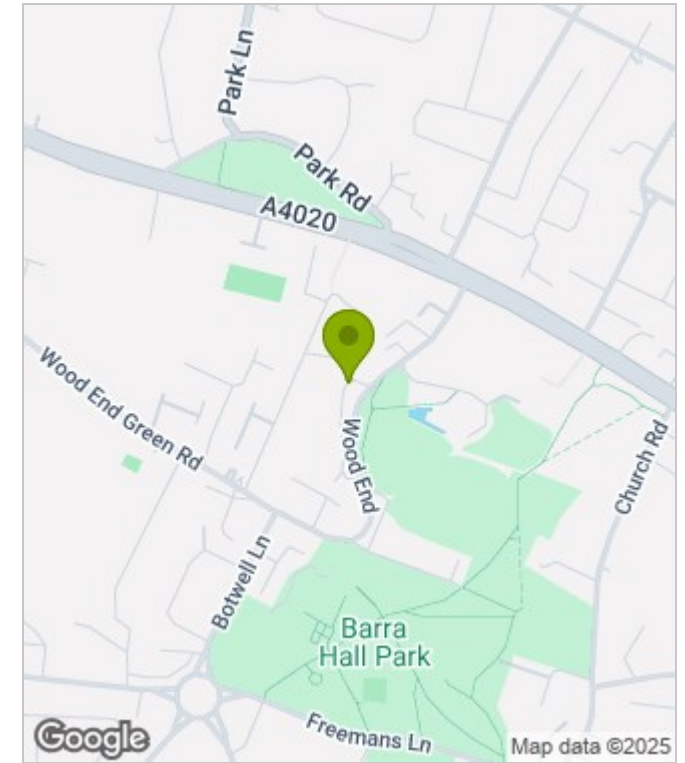
For identification only - Not to scale



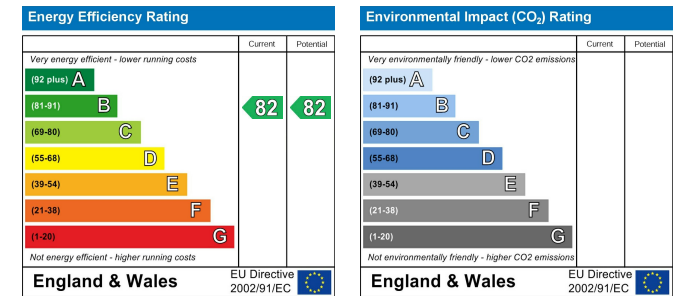
Floor plan produced in accordance with RICS Property Measurement Standards incorporating International Property Measurement Standards (IPMS2 Residential). ©Vizion Property Marketing 2024. Produced for Allday & Miller.

ALLDAY & MILLER
estate agents

Area Map



Energy Performance Graph



These particulars, whilst believed to be accurate are set out as a general outline only for guidance and do not constitute any part of an offer or contract. Intending purchasers should not rely on them as statements of representation of fact, but must satisfy themselves by inspection or otherwise as to their accuracy. No person in this firm's employment has the authority to make or give any representation or warranty in respect of the property.